

Community Disaster Risk Reduction Fund

Community Engagement Survey

Results and Outputs

British Virgin Islands (BVI)

(East End Tortola, Sea Cows Bay (Tortola)
and Jost Van Dyke)



Contents

2 Methodology

3 Overview

5 Socio-demographic profile

7 Perceptions of community issues

Community participation and inclusion

- 10 Role in community development
- 11 Community-Based Organisation (CBO) engagement
- 12 Community group membership
- 13 Community group perceptions
- 14 Community participation opportunities
- 15 Community activities

Engagement preferences

- 17 Community development involvement
- 18 Communication setting
- 19 Day and time to be informed
- 20 Frequency of communication

Communication channels

- 22 Electronic device access
- 23 Internet service availability
- 24 Internet service quality
- 25 Preferred information sharing method
- 26 Emergency alert preference
- 27 Community development information preference
- 28 Trusted information sources
- 29 Feedback frequency
- 30 Preferred method of feedback from government agencies

Hazard management practices

- 32 Community Emergency Shelters
- 33 Community disaster plan awareness
- 34 Presence of a family disaster plan

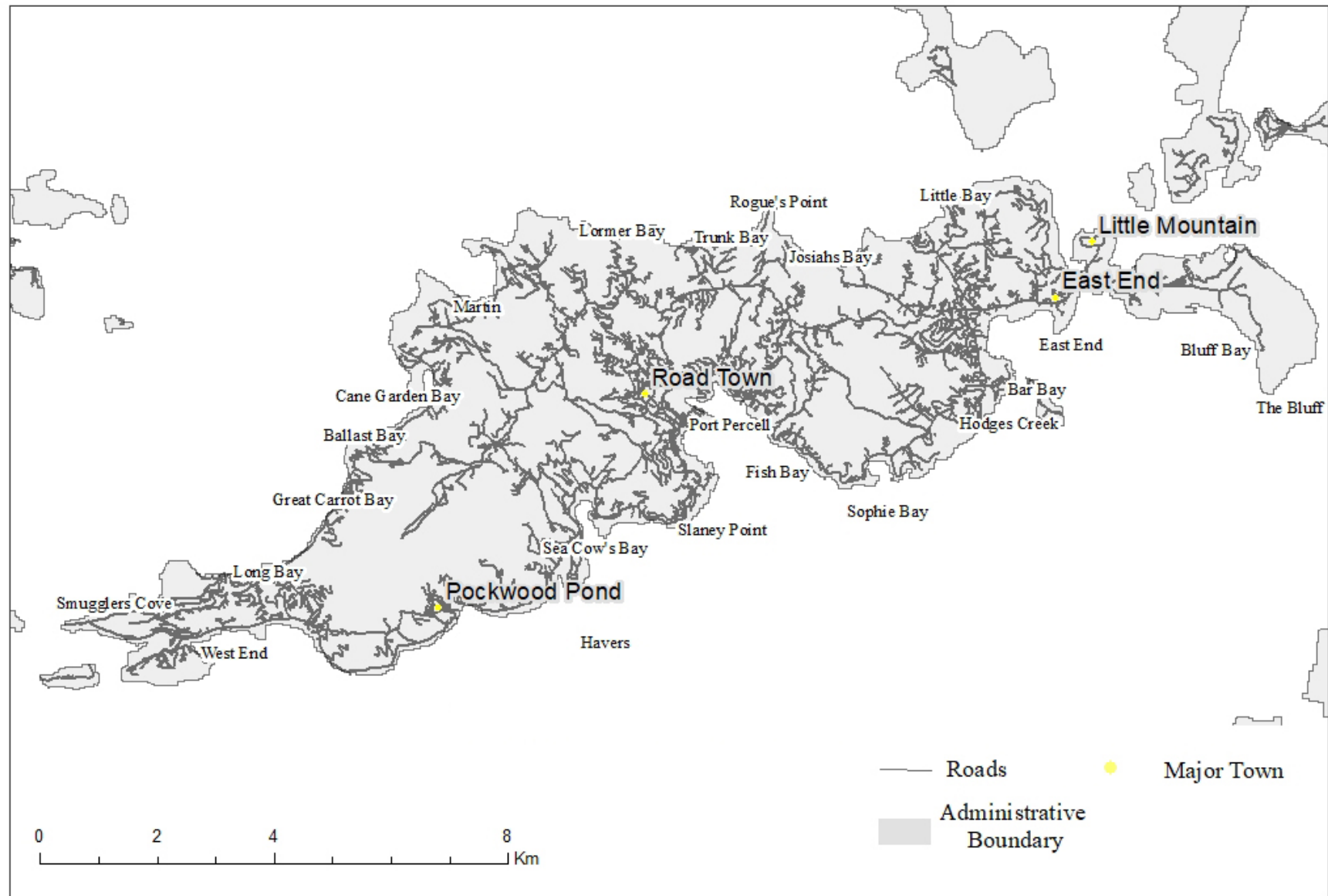
Methodology

The CDRRF Community Engagement Survey (CES) was conducted in collaboration with the Department for Disaster Management (DDM) and Social Development Department in the British Virgin Islands. This research was executed across the three project beneficiary communities, namely Jost Van Dyke, Sea Cows Bay and East End/Long Look over the period August 27 - September 3, 2018 as a part of the DDM's SMART Communities Project funded by the CDRRF. The CES as a precursor to the design and implementation of engagement strategies to secure community-wide participation and involvement project activities. Data were collected in the three target communities by a team of 22 community-based data collectors using a convenience sampling method. The questionnaires were administered to 225 community members and data collectors sought to maintain an even spread across sex and age groups.

Overview

- BVI is a part of the Virgin Islands archipelago, and comprises four main islands, namely, Tortola, Virgin Gorda, Anegada, and Jost Van Dyke, along with over 50 other smaller islands and cays of which 15 are inhabited.
- Tortola is the largest island which is 11.8 miles long and 3 miles wide and mountainous. The coastline is indented with numerous bays and the watercourses or 'ghuts' which are normally dry, only flowing during heavy rainfall.
- Flooding is common along the shoreline, in shallow depressions, and salt ponds. Jost Van Dyke which is 4.2 miles long and 0.75 miles wide is the smallest of the major inhabited islands. The four islands have a total population of 28,054, of whom approximately 23,098 live on Tortola and 298 on Jost Van Dyke. The major population centres are located in the coastal areas, with commercial and industrial activities being the predominant land use.
- The coastal communities have a high vulnerability to flooding. Between 1995 and 2012, BVI was affected by 17 flood events which had a cumulative estimated cost of USD80.45 million (mn) and the impacts included damage to homes and businesses, landslides, high sedimentation levels and contamination of coastal waters by pesticides, fuel, and untreated sewage, and damage to critical infrastructure.
- In connection with the environment, the key environmental issues currently facing BVI can be summarised as follows: (a) waste management – need to improve the waste management systems; (b) energy – high dependence on oil and the limited use of renewable energy; (c) water - limited natural freshwater resources, except for a few seasonal streams and springs on Tortola; (d) heavy reliance on freshwater produced by desalination plants; and (e) public education – need to increase education and awareness of several environment topics and issues including CC, DRR, tsunamis, and renewable energy (RE).

Tortola, British Virgin Islands



Socio-demographic profile

Socio-demographic profile



Disability/Possible Disadvantage

Significant differences of the total numbers of reported disabilities were found based on the district ($p=0.029$). The most significant differences were between East End Tortola and Jost Van Dyke ($p=0.024$). Gender differences in reported possible disadvantage were not statistically significant ($p=0.8$).



Age



Occupation



Native Language



Community



388
respondents

58%

East End
Tortola district

32%

Sea Cows Bay
Tortola

10%

Jost Van
Dyke

Fairly equal age distribution with each age category ranging between 14%-25%, the only exceptions were:



East End Tortola and Jost Van Dyke

**36 years
and older** **>60%**



Sea Cows Bay

**35 or
younger** **47%**

Top 6 professions:



Unemployed

East End Tortola (16%) and Jost Van Dyke (15%), Cows Bay Tortola (14%)



Students

Sea Cows Bay Tortola (18%), East End (5%) and Jost Van Dyke (8%)



**Teaching professionals, house
builders, chefs and manager**

All communities

88%
English

Sea Cows
Bay Tortola

13%
Spanish

Jost van
Dyke

13%
Spanish **5%**
French

East End
Tortola

7%
Spanish

Perceptions of community issues

Perceptions of community issues

Respondents' prioritization of community issues

 Overview

Top 5 issues:

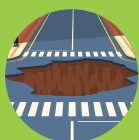


Priority issues by age group



Priority issues by occupation

Differences among 2nd priority issue:



Road repairs
Younger age groups



Garbage disposal and sewage
Older age groups

Road repairs

Armed forces (100%), Administrative professionals (50%), Social Work/Counselling Professionals (50%)

Sewage issues

Mechanical engineers (50%), Managers (40%)

Crime

Graphic and Multimedia designers (100%), Social Work/Counselling Professionals (50%)

Garbage disposal and water issues

Accountants (50%)

Improved facilities

Public relations professionals (100%), Social & religious professionals (100%)

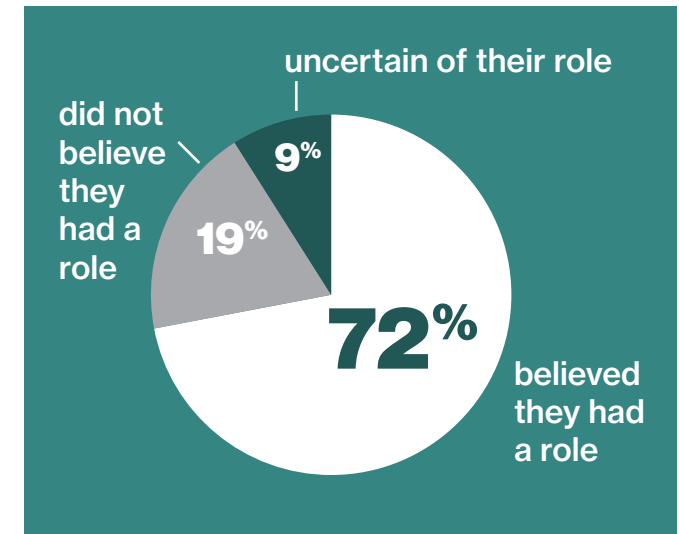
Community participation and inclusion

- 10 Role in community development
- 11 Community-Based Organisation (CBO) engagement
- 12 Community group membership
- 13 Community group perceptions
- 14 Community participation opportunities
- 15 Community activities

Role in community development


Respondents' perceptions of their own role in community development

 Overview



 Gender differences

 Age group differences

 Language differences

Believed they had a role in community development:



73%
Males



70%
Females

18-25 age group

Lowest affirmations of their role in community development

56%

All other age groups on average scored 75%



Believed they had a role in community development:

76%
English speakers

50%
French speakers


41%
Spanish speakers

Community-Based Organisation (CBO) engagement

Respondents' rate of invitation to group activities



 Gender differences

 Language differences

 Occupational differences

Invited to participate in community-based activities



51%
Males



43%
Females

26% Spanish speakers reported the lowest proportion of community participation

75% French speakers reported the highest relative proportion who confirmed community participation

48% English speakers

most involved (>60%)

Social and Religious professionals, Social Work and Counselling Professionals, Musicians, Singers and Composers, Customs and Border Inspectors, Child care workers/Teacher aides, Police Officers, Inland Coastal waters fishery workers, Plumbers, Tailors/Dressmakers, Laundry machine operators (100%), Drivers (100-67%), Mechanical Engineers (75%), Chefs (75%), Skilled Agricultural Forestry and Fishery Workers (67%), Managers (67%)

least involved (<50%)

Unemployed (47%), Teaching professionals (42%), Students (33%), Cleaners and helpers (25%), Engineering professionals (0%), Accountants (0%), Creative and Performing Artists (0%),

Community group membership

Respondents' level of community group membership

 Overview



80%
non-membership



20%
membership



Gender differences



Age group differences



Language differences



15%
Males



29%
Females



**18-25,
56 and over**

recorded the lowest relative proportions who indicated being members

15%

Group membership in all other age groups between these extremes averaged around 25%

26% **Spanish speakers**
highest levels of group membership

25% **French speakers**

20% **English speakers**
lowest levels of group membership

Community group perceptions

Respondents' feelings about community groups

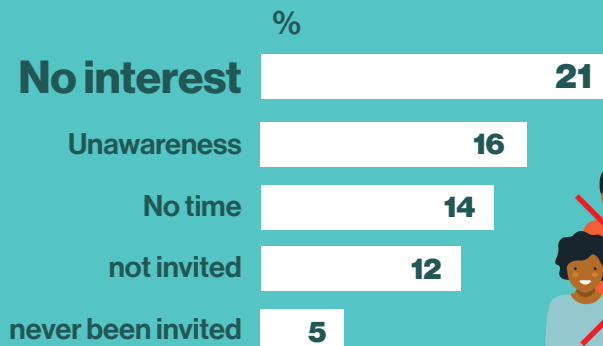


Overview



Community differences

Reasons for non-membership:



Most prevalent responses:

helpful to community

All communities (27%)

groups need to be more active

Jost Van Dyke (22.5%)
Sea Cows Bay Tortola (10%)
East End Tortola (10%)

don't know any groups

Sea Cows Bay Tortola (14%)
Jost Van Dyke (5%)

Community participation opportunities

Respondents' opportunities to participate in community development activities

 Overview

Had an opportunity to participate in community activities



48%

Jost Van Dyke
65%

East End Tortola
47%

Sea Cows Bay Tortola
44%



Gender differences



Age group differences



Language differences



55%
Males



39%
Females



46-55 age group
only cohort that
recorded having:
>50%

49% English speakers

43% Spanish speakers

25% French speakers



Community participation and inclusion

Community activities

Highest ranked activities by overall participation rate



Parties



Disaster preparedness activities

41% Total



most popular

26-35 (78%),
56 and over (50%)

least popular

36-45 (19%),
18-25 (30%)

92%

East End Tortola

79%

Sea Cow Bay Tortola

11%

Jost Van Dyke

51% Total



75% Sea Cows Bay Tortola

67% East End Tortola

24% Jost Van Dyke



Overview



Religious activities



Sports



Parents Teacher Association meetings

27%



participated in at least one community activity

Jost Van Dyke

70%

Sea Cows Bay Tortola

18%

East End Tortola

10%

80% Total



93% East End Tortola

82% Sea Cows Bay

48% Jost Van Dyke

72% Total



77%

Males

64%

Females

96%

East End Tortola

10%

Jost Van Dyke

55% Total



47%
Males

64%
Females



<50%
18-25, 56 and over

91%
East End Tortola

67%
Sea Cows Bay Tortola

24%
Jost Van Dyke

Engagement preferences

- 17 Community development involvement
- 18 Communication setting
- 19 Day and time to be informed
- 20 Frequency of communication

Community development involvement

Respondents' desire for community development involvement

 Overview



73%
desired to be
involved in
community
activities

87%
Jost Van
Dyke

70%
Sea Cows
Bay Tortola

68%
East End
Tortola



Gender differences



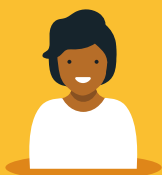
Age group differences



Language differences



69%
Males



79%
Females



Lowest levels of desire
36-35, 56 and over
67%



Highest levels of desire
46-55, 18-25
82%

Desire for community involvement

100% French
speakers

74% English
speakers

59% Spanish
speakers

Communication setting

Respondents' preferred location for receiving communication



Overview



Gender differences



Age group differences

The top two preferred settings were:



40%

Community Meetings



36%

Church



52%

Males preferred Community meeting



47%

Females preferred Church

All age groups named community meetings and church as their top 2, except:



18-25 age group

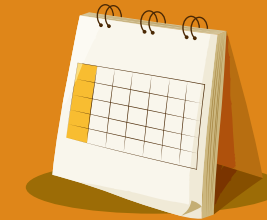
2nd preferred setting:
on the street

Day and time to be informed

Respondents' preferred day and time to be informed about community activities

 Overview

Most preferred days:



Sunday
34%

Saturday
30%

Monday
23%



Gender differences



Age group differences



Preferred time

Differences in 2nd preferred day/time:



45%

Males preferred mornings



43%

Females preferred afternoons



All age groups
below 56 years
had a higher preference for
Mornings



43%
Mornings



40%
Afternoons



17%
Evenings

East Tortola (48%)
Jost Van Dyke (45%)

Mornings

Sea Cows Bay
Tortola (39%)

Afternoons

Frequency of communication

Respondents' preferred frequency of community updates



Overview



Community differences



Language differences

Top 3 preferred frequencies:



Monthly
43%

Bi-weekly
35%

Daily
13%

Although 'monthly' was the frequency preferred across all three districts:

East End Tortola

preferred Bi-weekly just as much as Monthly

Jost Van Dyke

preferred Bi-weekly just as much as Monthly

Bi-weekly

French speakers

75%



Monthly

Spanish speakers

60%

English speakers

41%

Communication Channels

- 22 Electronic device access
- 23 Internet service availability
- 24 Internet service quality
- 25 Preferred information sharing method
- 26 Emergency alert preference
- 27 Community development information preference
- 28 Trusted information sources
- 29 Feedback frequency
- 30 Preferred method of feedback from government agencies

Communication channels

Electronic device access

Respondents' level of access to electronic devices



Tablet



Desktop Computer

46% Total

80% Jost Van Dyke

71% Sea Cow Bay Tortola

17% East End Tortola

53% Total



18-25 (88%)

had significantly higher access to desktop computers than all other age groups (25% - 33%)

100%
Jost Van Dyke

70%
Sea Cows Bay Tortola

39%
East End Tortola



Overview



Cell phone



Laptop computer



Landline

100%

reported having access to at least one type of electronic device

99% Total



76% Total



highest access
18-25 (100%)

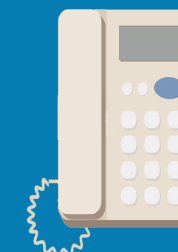
lowest access
26-35 (57%)

93%
Sea Cows Bay Tortola

90%
Jost Van Dyke

55%
East End Tortola

69% Total



Internet service availability

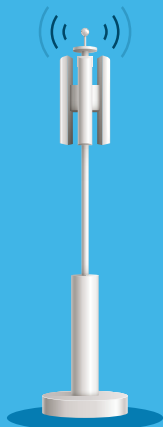
Respondents' level of access to internet service



Overview



Language differences



98%

indicated they had
internet access

75%

French
Speakers

>95%

All other
language
groups

Internet service quality

Respondents' most prevalent ratings of internet quality



Occupational differences

Skilled Agricultural Forestry and Fishery Workers, Managing Directors and Chief Executives, Teaching Professionals, and House Builders

Only occupations which reported:

very good



Overview



Community differences



Age group differences



Language differences

Top 3 responses:



38% fair

26% poor

20% very poor

All communities
fair (33%)

Highest relative proportion:

East End Tortola
poor

Sea Cows Bay
very poor

Jost Van Dyke
very good



18-25

scored the highest proportions of all age groups who rated as

very poor (37%)

French speakers
were the most polarizing

67%
very good


33%
very poor

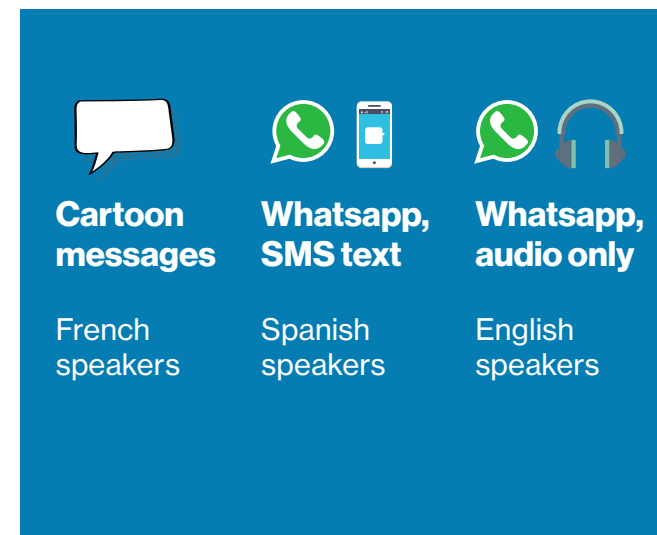
Preferred information sharing method

Respondents' preferred methods of information sharing

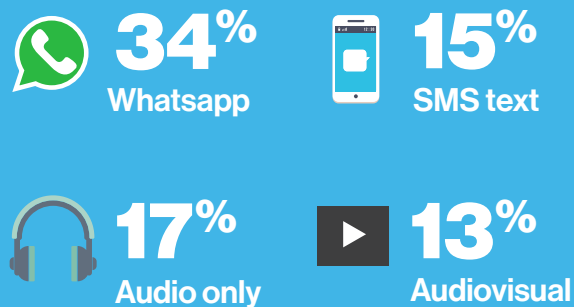
 Overview

 Community differences

 Age group differences



Top 3 methods:



Although Whatsapp was the most preferred medium there were differences in the 2nd preference



Emergency alert preference

Respondents' most preferred means for receiving emergency alerts



Overview



Community differences

Top 3 means:



42%

Word of mouth



28%

PA system



13%

Whatsapp

Most preferred:



Word of mouth

East End Tortola
and Sea Cows
Bay Tortola



Whatsapp

Jost Van Dyke

Community development information preference

Respondents' most preferred means for receiving community development information



Overview



Community differences

Top 3 means:



41%

Text messages



30%

Radio



22%

Word of mouth

East End Tortola

Radio (33.1%), text messages (32.4%) and word of mouth (24.8%)

Sea Cows Bay Tortola

Text messages (49.5%), Radio (29.4%) and word of mouth (15.6%)

Jost Van Dyke

text messages (51.4%), followed by word of mouth (29.4%) and radio (16.2%).

Trusted information sources

Respondents' most trusted sources for reliable community development and disaster risk management information



Overview



Community differences

Top 5 most trusted sources:



26%

Government agencies



25%

Neighbours



15%

Parents



15%

Pastors



13%

Community leaders

Neighbours and pastors

East End Tortola

Government agencies and neighbours

Sea Cows Bay Tortola

Government Agencies and community leaders

Jost Van Dyke

Feedback frequency

Frequency of feedback received on community development and disaster risk management issues from existing community-based organizations (CBOs) and NGOs in respondents' districts



Overview



Community differences



70%

did not receive frequent
feedback on community
development/DRM issues

Reporting frequent feedback:

47%

Jost Van Dyke

27%

Sea Cows Bay
Tortola

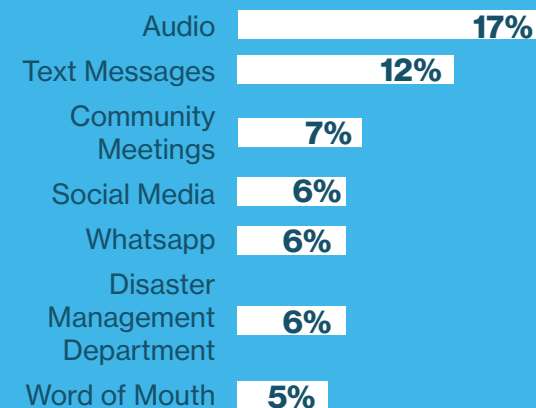
21%

East End Tortola

Preferred method of feedback from government agencies

Preferred method of feedback from government agencies such as the Social Development Department, Fire Department, and the Office of Disaster Preparedness and Emergency Management

Top preferred methods:



Community differences



Occupational differences

Top preferred method:

audio and text messages

East End Tortola and Sea Cows Bay Tortola

feedback from the Disaster Management Department and Community meetings

Jost Van Dyke



Phone call

Justice of the Peace, Security and Block Maker



Text message

Nurse, Block Maker, Chef



Community meetings

Unemployed, Shopkeeper, Housewife, Music Production, Vendor, Hairdresser, Horticulturalist, Driver, Administrative Assistant, Cashier, Salesman



Town Crier

Vendor, Attendant, Labourer



Television

Assistant Chef, Artist, Hairdresser, Security



Social media

Artist



Flyer

Gardener

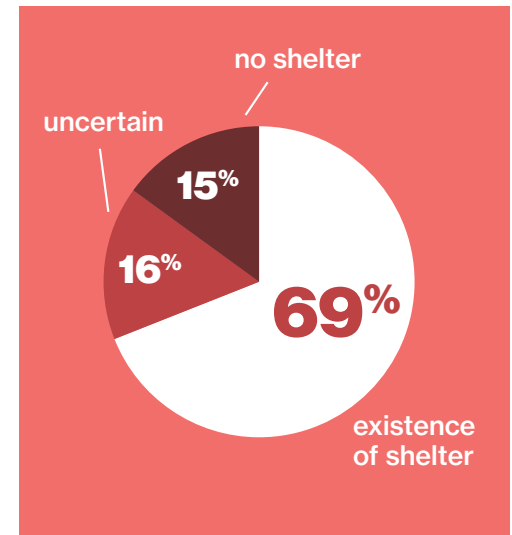
Hazard Management Practices

- 32 Community Emergency Shelters
- 33 Community disaster plan awareness
- 34 Presence of a family disaster plan

Community Emergency Shelters

Respondents' awareness of community emergency shelters

 Overview



Community
differences



Gender
differences



Age differences



Language
differences

Awareness of emergency
shelter:

74% Sea Cows Bay
Tortola

68% East End Tortola

54% Jost Van Dyke

Awareness of emergency
shelter:

74%
Males

62%
Females



18-25
highest
awareness
86%



26-35
lowest
awareness
58%

>70%
awareness
English,
French
Speakers

46%
lowest
awareness
Spanish
speakers

Community disaster plan awareness

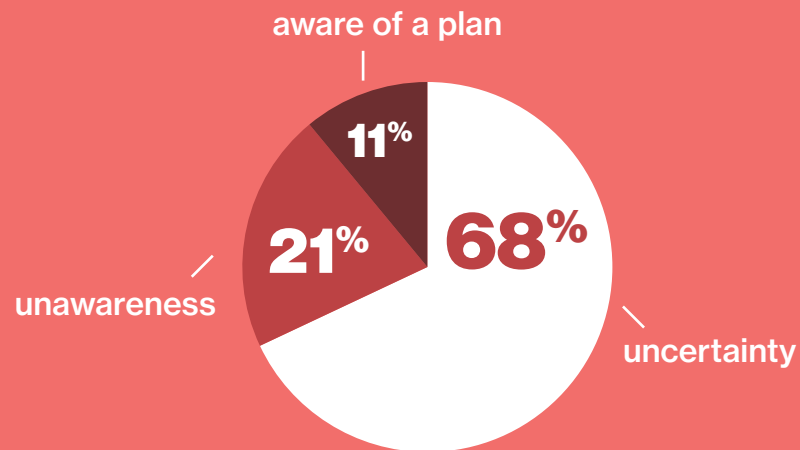
Respondents' awareness of community disaster plan



Overview



Community differences



Highest level of awareness

**Jost Van Dyke (15%)
and Sea Cows Bay
Tortola (13.9%)**

Highest level of uncertainty

**East End Tortola and
Sea Cows Bay (70%)**

Presence of a family disaster plan

Respondents having a family disaster plan



Overview



Language differences



53%

did not have a family disaster plan

Had a family disaster plan:

French speakers

100%

English speakers

48%

Spanish speakers

29%

